

PORTABLE EQUIPMENT

N130



VIBROMETER

MACHINE
ANALYSER

SPECTRUM
ANALYSER



NEW



CEMB

BALANCING MACHINES

N130 PORTABLE EQUIPMENT



STANDARD ACCESSORIES

No.1 accelerometer transducer 100mV/g

No.1 magnetic base Ø 25mm

No.1 probe

No.1 transducer connection cable L 2m

No.1 USB stick with manuals

Battery charger with multiplug adapters

Carrying case

Micro USB Cable

OPTIONAL ACCESSORIES

No.1 Photocell complete with upright and magnetic base

No.1 Connection cable 5m for transducer

No.1 Connection cable 5m for photocell

No.1 Extension cable 10m for transducer

No.1 Extension cable 10m for photocell



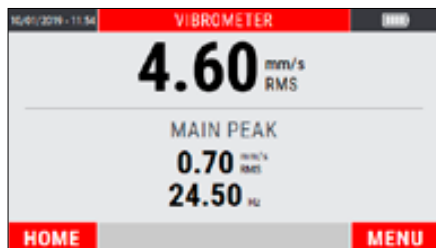
The smart solution for vibration analysis



Intuitive functions under full control

- 10 KHz Vibrometer and Machine Analyzer
- **4.3" color graphic display**
Very high luminosity and contrast for sunlight use
Wide view angle
- **Enhanced click keyboard**
Optimal tactile feedback
Designed for gloves use
- **Heavy duty and metallic connectors**
- **Fast measure**
- **Huge memory space**
14.8 GByte, expandible to 128 GByte
1000+ measures for each type
- **Easy reporting**
Screenshot display capture and save
Smart route data store
Output file: JSON format
Micro USB 2.0 data port

VIBROMETER & TACHO



- Big readable characters
- Overall with main peak
- 1x fundamental with phase
- Speed rotation

HIGH RESOLUTION FFT



- Graphic zoom
- Peak cursors
- Autoscale feature
- List of main peaks

SMART ANALYSIS



- Machine troubleshoot at a glance
- Vibration root cause identification
- Step by step according ISO10816-3
- Automatic speed detection

BEARING ANALYSIS



- Based on envelope algorithm
- Bearing condition evaluation
- Store CBA value for trend analysis and predictive maintenance

INTELLIGENT DATA SAVING



STEP 1: Enter the machine name



STEP 2: Select the bearing



STEP 3: Enter the X, Y or Z direction

CEMB

TECHNICAL DATA

GENERAL CHARACTERISTICS

- Display: 4,3" colour LED-backlit TFT LCD (480 x 272 pixel).
- New EasyClick tactile keyboard with embossed keys
- Internal memory: 14,8 Gb (expandible to 128 Gb)
- Multi languages user interface

MEASUREMENT TYPES

- Effective value (RMS)
- Peak value (Pk)
- Peak-to-peak value (PP)

MEASURING PERFORMANCE

- Bandwidth: 1-10 KHz
- FFT Resolution: Max 3200 lines
- Tacho: Up to 250000 rpm

UNITS OF MEASUREMENT

- Acceleration: [g]
- Velocity: [mm/s] or [inch/s]
- Displacement: [μ m] or [mils]
- Frequency: [Hz] or [Cpm]

INPUT

- 1 measuring channels IEPE sensor, accelerometer and velocimeter (with a specify cable pluggable on a BNC for read any dinamic signal max. 5V-PP)
- 1 photocell channel (velocity and angle reference)
- 1 MicroUSB 2.0 port for data transfer
- 1 jack plug for battery charger

AMBIENT

- Temperature: from -20° to +70° C
- Air humidity: from 0 to 95% without condensate
- Protection: IP54

POWER SUPPLY

- Long Life Battery: > 8 hours based on typical use
- Charging time: 2,5 hours for 80% recharge
4 hours for 100% recharge
- Rechargeable 3100 mAh Lithium battery
- Power supply-battery charger for 100-240 V, 50/60 Hz (24 V, 1.5 A)

CARRYING CASE DIMENSIONS AND WEIGHT

- Approx. 370(L) x 300 (H) x 115(D) 1800 g



CEMB S.p.A. - Via Risorgimento, 9
23826 Mandello del Lario (LC) - Italy
www.cemb.com



Vibration analysis division:
Phone +39 0341 706111
e-mail: stm@cemb.com

Tutti i dati e le caratteristiche menzionati in questo catalogo sono a titolo indicativo e non costituiscono nessun impegno per la nostra Società che si riserva il diritto di apportare senza alcun preavviso, tutte le variazioni che riterrà opportune.